



May 2013  
Volume 2,  
No. 2

## INSIDE THIS ISSUE

AATJ Facebook	1
Co-Presidents' Message	1
Important Dates	2
AATJ Annual Fall Conference Information	4
AATJ Annual Fall Conference Schedule	5
Professional Development Grants Information	6
National Japanese Exam	9
News from Affiliates	10
Call for Papers	12
Job Opening Announcements	14
AATJ Endowment	22
AATJ Sponsors	22
AATJ Membership Application Form	23
AATJ Board of Directors	24



## \*\* "Like" AATJ on Facebook! \*\*

Check out AATJ's Facebook page, and "Like" us to receive updates and the latest news.

Click the link on our home page ([www.aatj.org](http://www.aatj.org)), or search for "AATJ-American Association of Teachers of Japanese" on Facebook.



## Co-Presidents' Message

### Making the Most of Your Summer Travel to Japan

As we enjoy the last month of another school year, many of us are busy preparing for summer travel to Japan with students. We salute all of you who are taking the time from your own summer rest to embark on these journeys. These trips are some of the best advocating that we can do for our programs. This month, we thought it might be fun to consider how to maximize your students' language learning experience while in Japan and offer some ideas for language materials you can collect while on your trip. We know that many of you have even more creative activities that you have used over the years. According to students' language level, teachers can increase or reduce the difficulty of each of these activities. Please join the "conversation" about this topic on the AATJ Facebook page. **Also, there are examples of all of the activities listed here available at <http://ctworldlanguagesk8.wikispaces.com/Summer+Travel>.**



### What Students Can Do While in Japan

**1. Find a person who... Bingo.** Create a bingo template in which students have to find people in Japan who have various jobs, are various ages, etc. Students have to get the person to sign their bingo sheet in the appropriate box. Students who fill in all of the boxes get a prize (or a 100% grade on their first quiz in the fall). See a sample at our examples page listed above.

**2. Kanji Bingo.** Create a bingo page with various kanji that may occur in context as you travel around Japan. Students must write under the kanji where they saw it and what it means in that context. Students must fill in all of the boxes, or two lines of the bingo sheet, depending on difficulty. See a sample at our examples page listed above.

**3. Authentic Materials Activity Creation.** Students must find at least two authentic items that have Japanese written on them (newspaper, sale advertisement, poster, brochure, etc.) and make up English questions for their peers about the content of the authentic item. Students should also include answers to the questions (to prove their own comprehension). Students hand this in a week or two after the trip. The teacher can set up these activities in folders in the classroom in the fall for students to complete when they finish work early or as extra credit homework assignments.

**4. Record yourself....** According to the students' language level, teachers assign students to record themselves having an authentic conversation such as introducing themselves, talking about foods, talking about family, asking directions, etc. Most students have iPods or cell phones that record. Teachers can use the directions on the examples page listed above.

(Continued on Page 2)

## Important Dates

**AATJ Fall Conference Early-Bird Registration Deadline: July 10, 2013**

**Professional Development Grant Application Deadline: September 10, 2013**

**AATJ Fall Conference Advance Registration Deadline: October 30, 2013**

**AATJ Fall Conference : November 22-24, 2013**

**Japanese Language Proficiency Test: December 1, 2013**

5. **“Get the Picture” Scavenger Hunt.** Students must get their pictures taken at various sites and/or with various people (a Japanese high school student, an older person, a train conductor, etc.). The first student to get all the photos and bring them to you wins a prize. You can make a bulletin board of this when you arrive back, grouping similar pictures together. See a sample list at our examples page listed above.
6. **6. Self-Guided Project.** Before students leave, they choose a topic on which to focus while they are in Japan. See a list and sample directions on the example page. While in Japan, students collect information about the topic for a multimedia presentation in the fall.

## What Teachers Can Do While in Japan

**1. Collect realia.** We are certain you all do this already, but this year, look carefully for authentic reading and listening materials that you can use regularly in class. The Common Core, AP, and ACTFL Proficiency Guidelines all require that students have more and more exposure to authentic materials in order for their proficiency to increase. Look for brochures, menus, posters, etc. that are high interest and fit into the units you teach.

**2. Record authentic conversations.** Students are always more engaged when the person speaking is not their everyday teacher! As much as possible, record people saying self-introductions, discussing likes and dislikes, and discussing any topic that you cover in your units. It takes time, but it will make your lessons much more engaging for students.

**3. Think about your curriculum.** As you travel through Japan, notice “holes” in what the students are able to do in terms of survival skills. Perhaps they need more practice with directions, or different vocabulary for conversations than your textbook offers. This is your chance to observe them in the ultimate “assessment” situation and adjust your curriculum accordingly.

**4. Take lots of pictures to promote your program.** Think advocacy, advocacy, advocacy. Perhaps you can have a travel blog while you are in Japan or at least take lots of pictures to post afterward (with student permission). You could also offer to send postcards from Japan to the students in the school who couldn’t go on the trip (charge them \$1 or \$2 for postage).

This is just a short sample of some of the things many of you have been doing all along. Most importantly, while you are in Japan, don’t forget to eat your favorite foods, visit the 100円 shop for classroom supplies, and take some time to rest with a cup of tea in a beautiful place. You deserve it!

Happy summer!

Jessica Haxhi  
[jhaxhi@waterbury.k12.ct.us](mailto:jhaxhi@waterbury.k12.ct.us)  
 Y.-H. Tohsaku [ytohsaku@ucsd.edu](mailto:ytohsaku@ucsd.edu)  
 Co-Presidents



## Have You Renewed Your AATJ Membership?

We thank the many AATJ members who have renewed their memberships for 2013. If you have not yet done so, please take a moment to renew, either online (go to <http://www.aatj.org/membership>) or using the paper form that can be found on page 23 of this issue of the newsletter.

If you are not sure whether you need to renew, please contact the office at [aatj@aatj.org](mailto:aatj@aatj.org), and we will be happy to check for you.

Don’t miss the many benefits of membership: student participation in the National Japanese Exam, the Nengajo Contest, and the Japanese National Honor Society; conference attendance at member rates; publications and professional development activities.

## ANNUAL FALL CONFERENCE: 2013, Orlando FL

The second annual AATJ Fall Conference will be held during the American Council on the Teaching of Foreign Languages (ACTFL) Annual Convention and World Languages Expo, **Friday, November 22 through Sunday, November 24, 2013**, at the Orange County Convention Center in Orlando, Florida. The ACTFL Annual Convention and World Languages Expo will feature over 600 educational sessions covering a wide spectrum of the language profession addressing the theme *New Spaces, New Realities: Learning Any Time, Any Place*. The ACTFL Convention is an international event bringing together over 6,000 language educators from all languages, levels and assignments within the profession.

**Online registration and housing is now open.**

**Registration:** Early-Bird Registration By Wednesday, July 10, 2013  
Advance Registration By Wednesday, October 30, 2013  
Onsite After Wednesday, October 30, 2013

To register for the ACTFL Convention, please go to the website (<http://www.actfl.org/convention-expo/2013-actfl-convention-world-languages-expo/registration>). **AATJ members are strongly encouraged to register by choosing Option 2: Co-sponsoring Organization (AATJ) Member Registration.**

**Housing:** The AATJ presentation sessions and luncheon will be held at **Rosen Centre Hotel** (9840 International Drive, Orlando, Florida 32819). Therefore, Rosen Centre Hotel is the most convenient place to stay for AATJ members. For details regarding hotel reservations, please look at the website (<http://www.actfl.org/convention-expo/2013-actfl-convention-world-languages-expo/housing>).

Official Hotels: Rosen Centre Hotel, Peabody Hotel, Rosen Plaza Hotel, Hilton Orlando

### Scholarship Opportunities:

**ACTFL/VISTA HIGHER LEARNING FIRST TIME ATTENDEE SCHOLARSHIP PROGRAM:** ACTFL and Vista Higher Learning are co-sponsoring this scholarship program which offers ACTFL members who have never attended an ACTFL Annual Convention and World Languages Expo the opportunity to apply for a \$250 scholarship. This scholarship is to provide some assistance with the expenses associated with attending the convention. To apply, go to (<http://www.actfl.org/convention-expo/scholarship-opportunities/actflvista-higher-learning-first-time-attendee-scholarship>).

**ROBERT J. LUDWIG SCHOLARSHIP PROGRAM:** Robert Ludwig, former ACTFL President in 1989, left a bequest to ACTFL to create the Robert J. Ludwig Scholarship Program, which annually awards three foreign language teachers with a \$250 scholarship that is to provide assistance with the expenses associated with attending the convention. Scholarship applicants must be ACTFL members, first-time attendees of the ACTFL Annual Convention & World Languages Expo, and within the first three years of their teaching career. To apply, go to (<http://www.actfl.org/convention-expo/scholarship-opportunities/robert-j-ludwig-scholarship-program>).

**Presentation Sessions:** This year, AATJ will sponsor three concurrent sessions including 12 research paper presentations and 33 one-hour learning sessions, which will be held in the Mezzanine Meeting Rooms at the Rosen Centre Hotel over the three days of the conference. Three AATJ special sessions have been planned: (1) Special Panel: "Expanding Japanese Teacher Community Through AATJ Special Interest Groups" (3:45-4:45 p.m. on Fri, 11/22); (2) Panel: "Teaching Literature in the Japanese Language Classroom" (5:00-6:00 p.m. on Fri, 11/22); and (3) Special Event: "Long Traditions, New Directions: 50 Years of Japanese Professional Collaboration" (5:15-6:15 p.m. on Sat, 11/23).

For the full schedule, please see pages 5 - 7 in this issue of the newsletter.

**General Membership Meeting and Reception:** The AATJ General Membership Meeting (4:00-5:00PM) and AATJ Reception (6:15-8:15PM) will be held before and after the special event celebrating the 50<sup>th</sup> anniversary of AATJ (Formerly ATJ) on Sat, 11/23.

**Luncheon:** The AATJ Luncheon will be held in Grand Ballroom B of the Rosen Centre Hotel from 12:30-1:45PM on Sat, 11/23. This year, the students from the University of Florida and the University of South Florida will present a dance for the attendees of the luncheon. The tickets are \$49 or \$56 after 10/30. Please purchase the luncheon tickets when you register for the conference. AATJ will not sell tickets at our booth. If you have already registered but did not request a luncheon ticket, please contact ACTFL or purchase your luncheon ticket from the on-site registration desk.

**Sumie (Japanese Ink Painting) Performance and Workshop:** The Association of Florida Teachers of Japanese will conduct a Sumie Workshop during the Exhibit Hall Visit Free Time (10:00-11:00AM on Fri, 11/22; 9:00-10:00AM, 3:00-4:00PM on Sat, 11/23; 9:00-10:00AM on Sun, 11/24) at the Exhibit Hall of the Orange County Convention Center. In addition to the Sumie performance and workshop, Shodo (Japanese calligraphy) of students studying Japanese in the state of Florida will be exhibited in the Japan Pavilion.

**Local Affiliate Council Meeting:** A local affiliate council meeting will be held from 12:00-1:00 p.m. Fri, 11/22 in Salon 19 of the Mezzanine Meeting Rooms at the Rosen Centre Hotel.





**2013 AATJ Co- Sponsored Program Schedule**

<b>Fri, November 22</b>	Rosen Centre Hotel--Mezzanine Meeting Rooms		
	Salon 19	Salon 20	Salon 21
8:30am - 10:00am	<b>Opening General Session</b>		
10:00am – 11:00am	<b>Exhibit Hall Opening</b>		
11:00am – 12:00am	21st Century Skills in Action Motoko Tabuse Yoshiko Saito-Abbott Dan Carolin Yo Azama	What Can You Do with iPads in the Japanese Classroom? Masahiro Tanaka Kazuo Tsuda	Issues and Challenges in Live On-Line Entry-Level Japanese Program Machiko Romaine Reiko Aya
12:00pm – 1:00pm	<b>Local Affiliate Council Meeting</b>		
1:15pm – 2:15pm	The Final-Year Report of J-GAP: Lessons Learned and Ideas for the Future Sufumi So Mieko Kawai Tomoko Marshall Tomomi Sato Koji Otani	<b>AATJ Research Paper Session I</b> Developing Language-Focused Tasks in Content-Based Instruction Noriko Fujioka-Ito Yasuko T. Rallings  Co-Constructing Products, Practices and Perspectives by Learners of Japanese Erica Zimmerman	Preparing Students for Success in Interpersonal Communication Skills Assessments Dan Carolin
2:30pm – 3:30pm	Using a Motion Sensor to Make Language Exercises Physically Dynamic Kazumi Hatasa	<b>AATJ Research Paper Session II</b> Teaching Reading Strategies: What JFL Instructors' Reflections Reveal Etsuko Takahashi Hisae Fujiwara  Learning through a Collaborative Action Research Project	Digital Learning Motivates and Enables Students Creators in Multilevel JHL Classrooms Masayo Ohyama Kazuo Tsuda Masahiro Tanaka
		Yasuo Uotate Naoko Komura Yukari Nakamura Mako Nozu	
3:45pm – 4:45pm	<b>AATJ Special Session</b> Expanding Japanese Teacher Community Through AATJ Special Interest Groups Eiko Ushida	<b>AATJ Research Paper Session III</b> Learners' Self-Motivation and L2 Identity Construction: An Online Learner-Community Project Yasuko Senoo  Managing the Extracurricular Language Table as a Meaningful Learning Environment Kanako Yao	Showing the Average Student How to Go Beyond the Average Michael Kluemper Lisa Berkson
5:00pm – 6:00pm	<b>AATJ Panel</b> Teaching Literature in the Japanese Language Classroom Joan Ericson Laurel Rasplica Rodd Lisa Berkson	<b>AATJ Research Paper Session IV</b> Brick and Mortar vs. Online Language Classrooms Ayako Anderson  Using Kanji and Bilingual Writing Expertise of Heritage Japanese Learners Aiko Sano Kazuko Nakajima Yuko Ikuta Tomoko Nakano Misa Fukukawa	Merging Language and Content: Moving toward Advanced Proficiency Ken-ichi Miura Yumiko Ono Yumiko Tashiro
6:30pm – 7:30pm	<b>ACTFL Awards Ceremony</b>		
7:30pm – 8:30pm	<b>President's Reception</b>		
7:30pm – 10:30pm	<b>AATJ Board Meeting</b>		

<b>Sat., November 23</b>	<b>Rosen Centre Hotel--Mezzanine Meeting Rooms</b>		
	<b>Salon 19</b>	<b>Salon 20</b>	<b>Salon 21</b>
8:00am – 9:00am	National Japanese Exam 2013: Towards Proficiency-Oriented Instruction Nobuko Hasegawa Tomoko Takami Miyuki Johnson	Making Literature Alive Using Project Learning Bicycle in Pre-AP Classroom Kazue Masuyama Mieko Avello	Teaching with Tablets & Technology: Bridging the Gap with Digital Natives William Paris Noriko Fujimoto-Vergel
9:00am–10:00am	<b>Exhibit Hall Visit Free Time</b>		
10:00am – 11:00am	Creating Materials for Language Teaching and Learning with iBooks Author Satoru Shinagawa Mayumi Ishida	Creating and Building a Successful Exchange Program William Matsuzaki	Comparing OPI Results of College and High School JFL Students Kyoko Shoji Asako Hayashi-Takakura
11:15am – 12:15pm	Brain-Based Instructional Approaches for Maximizing Student Learning Yoshiko Saito-Abbott Yo Azama Troy Brunke	Teaching Culture in Context: Group Collaboration with Native speakers Anna Zielinska-Elliott Mariko Henstock Emi Yamanaka	Classroom to the Real World: Backward Design in Business Japanese Atsuko S. Borgmann
12:30pm - 1:45pm	<b>AATJ Luncheon</b> (Grand Ballroom B, Rosen Center Hotel)		
2:00pm – 3:00pm	Writing Effective Recommendation Letters Susan Schmidt Janet Ikeda Susan Tanabe Yasuko Ito Watt	<b>AATJ Research Paper Session V</b> The Impacts of Vocal Reading and Vocalizing to Convey Keiko Okamoto Miharu Nittono Yoshiko Watanabe	Advocacy in Action: A Conversation Hosted by CAJLT Alexander Blackwelder
		Japanese Learners' Listening Skill Development: Teaching What to Listen For Yuka Naito-Billen Erika Hirano-Cook	
3:00pm–4:00pm	<b>Exhibit Hall Visit Free Time</b>		
4:00pm – 5:00pm	<b>AATJ General Membership Meeting</b>		
5:15pm – 6:15pm	<b>AATJ Special Event</b> Long Traditions, New Directions: 50 Years of Japanese Professional Collaboration Jessica Haxhi Yasu-Hiko Tohsaku	<b>AATJ Research Paper Session VI</b> LOLing to Learn: Enhancing Creativity and Individuality through Japanese "meme" Miyuki Yamamoto Naho Maruta Noriko Hanabusa  Ubiquitous Electronic Writing and Evolved Orthography: The Case of Teaching Japanese Michael Dixon	Multimedia Project on Natural Disasters for Promoting Cultural Proficiency Yoshimi Nagaya Kasumi Yamamoto
6:15pm-8:15pm	<b>AATJ Reception</b>		

Sun., November 24	Rosen Centre Hotel--Mezzanine Meeting Rooms		
	Salon 19	Salon 20	Salon 21
8:00am – 9:00am	Japanese Language Education Updates from the 2012 World-Wide Survey Maki Watanabe Isoyama	Exploring Japanese Culture First-hand: Moving beyond the Classroom Yoshimi Hirata Teruka Nishikawa	eConnection across Campuses: Thematic Units, ePortfolios, Social Networking Hiroko Harada Junko Tokuda Helen Barrett
9:00am–10:00am	Exhibit Hall Visit Free Time		
10:00am – 11:00pm	Expanding and Deepening Cultural Perspectives Through Information and Digital Technology Noriko Fujimoto-Vergel Yasu-Hiko Tohsaku	Giving Students a Choice and a Voice through UDL (Universal Design for Learning) Elizabeth Bays	Implementing Shadowing Practice into the Curriculum Noriko Takeda Aya McDaniel Mika Yamaguchi
11:15am – 12:15pm	Differentiated and Personalized Instruction in Advanced Japanese Courses Masako Douglas Hiroko Kataoka Kiyomi Chinen	Collaboration through Technology: the Online Japanese Language Contest Ikuko Yoshida	Path to Effectiveness with Can-Do Statements and Learning Portfolio Yuka Kitazono Hiroko Katsuta

## Cheng & Tsui Professional Development Grants for 2013



The Cheng & Tsui Professional Development Grant offers financial assistance to Japanese language teachers in grades K-16, especially those new to the field, for the purpose of attending training workshops, seminars, conferences, and other local, national, or international in-service learning experiences. The grant may also be used to collaborate with a mentor teacher. Teacher training workshops and seminars attended by the applicant should be focused on pedagogy and issues of teaching and learning. Cheng & Tsui Publishers, the sponsor of the grant, has designated an annual amount of \$1,000 to be divided between at least two teachers each year. Those interested in applying for the 2013 Cheng & Tsui Professional Development Grant should submit the following:

1. An application describing how they would use the grant (download from the application form from <http://www.aatj.org/prodev/C&TProfessionalDevelopmentGrants.html>);
2. The amount of subsidy requested and a proposed budget (included on the application form);
3. A current Curriculum Vitae.

Applicants must be current members of AATJ. Recipients are also asked to write a brief report after attending the event for which they were awarded money, summarizing their experience and what they learned. Applications will be evaluated by a panel of reviewers selected by the American Association of Teachers of Japanese and who have no professional or personal connections with applicants.

The application form and CV should be sent via e-mail attachment to [aatj@aatj.org](mailto:aatj@aatj.org) by **September 10, 2013**.

*AATJ is grateful to Cheng & Tsui Publishers for their support of teacher professional development.*



# 24/7 Japanese Channel Now Available for College Campuses



## Colleges can add the TV JAPAN Channel for only \$600 per year

TV JAPAN is pleased to announce a new program for Colleges to add the TV JAPAN Channel to the campus-wide cable network for only \$600 per year. Now all facilities on campus such as dormitories, offices, labs, libraries, etc. are included in this low annual fee.

**Students** studying Japanese can tune-in to TV JAPAN to practice their listening comprehension and familiarize themselves with contemporary spoken Japanese.

**Professors** can use insightful NHK Documentaries or popular cultural programs on TV JAPAN to complement their lectures

**Students and faculty** on exchange from Japan can keep up with current events

The feedback about TV JAPAN on campus has been very positive from students and faculty at these 32 colleges listed below that already took advantage of this \$600 annual fee offer to add TV JAPAN to their campus network:

Soka University, Aliso Viejo, CA  
Stanford University, Stanford, CA  
Central Connecticut State College, New Britain, CT  
Trinity College, Hartford, CT  
Emory University, Atlanta, GA  
Georgia Institute of Technology, Atlanta, GA  
University of Iowa, Iowa City, IA  
Coe College, Cedar Rapids, IA  
University of Illinois, Springfield, IL  
Valparaiso University, Valparaiso, IN  
Kansas State University, Manhattan, KS

Massachusetts Institute of Technology, Cambridge, MA  
Tufts University, Somerville, MA  
Amherst College, Amherst, MA  
University of Massachusetts, Amherst, MA  
Brandeis University, Waltham, MA  
Colby College, Waterville, ME  
University of Michigan, Ann Arbor, MI  
University of Nebraska, Kearney, NE  
Rutgers University, Piscataway, NJ  
Princeton University, Princeton, NJ  
SUNY Plattsburgh, Plattsburgh, NY

SUNY Delhi, Delhi, NY  
University of Mt. Union, Alliance, OH  
University of Toledo, Toledo, OH  
University of Dayton, Dayton, OH  
Gettysburg College, Gettysburg, PA  
Ursinus College, Collegeville, PA  
Brigham Young University, Provo, UT  
St. Michael's College, Colchester, VT  
Pacific Lutheran University, Tacoma, WA  
University of Wisconsin, Madison, WI

For more information about how to start TV JAPAN service at your College,  
please contact Scott Hiniker at NHK CosmoMedia America, Inc.  
by [scott@nhkcma.com](mailto:scott@nhkcma.com) or 212-713-8404

[www.tvjapan.net](http://www.tvjapan.net)



24/7 Japanese Channel  
Available Everywhere in USA



5月の番組ハイライト

最新作スタート!

ガリレオ



(c) 2013 FUJI TELEVISION NETWORK, INC.



24時間日本語チャンネルテレビジャパン  
お問い合わせはカスタマーサービスまたはウェブサイトまで

1-877-TVJAPAN  
885-2726

[www.tvjapan.net](http://www.tvjapan.net)



## National Japanese Exam 2013

The 2013 National Japanese Exam was taken by 1,475 students at a total of 108 high schools and middle schools across the country.

Congratulations to everyone who participated, and especially to the students who placed first among the test-takers in the several categories (Regular, Additional Japanese Experience, and Other) in the two levels of the test:

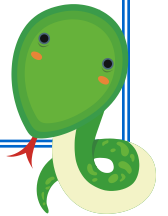
Haruka Aoki (St. John's School, Guam; teacher: Fumiko Harada Ziemer)  
 Ashlee Grove (Punahou School, HI; teacher: Junko Ady)  
 Taeka Hayashi (High Tech High School, NJ; teacher: Akemi Dobkin)  
 Kaleigh Lukacs (Central York High School, PA; teacher: Ellen Bearn)  
 Tak Chi Wan (Stuyvesant High School, NY; teacher: Chie Helsinki)  
 Samantha Wong (International School of Beaverton, OR; teacher: Hideki Watanabe)  
 Keita Yoshida (Father Duenas Memorial School, Guam; teacher: Wakana T. Burnham)

The first-place winners will receive medals and certificates from AATJ. All teachers whose students participated in the test will be able to download certificates for their students at 4 levels of achievement, from the AATJ website at

<http://www.aatj.org/studentactivities/nationaljapaneseexam/certificates.html>.

### 2013 Nengajo Contest

The winning entries in the 2013 Year of the Snake Nengajo Contest can be viewed on the AATJ website (<http://www.aatj.org/studentactivities/nengajocontest/2013/index.html>). Congratulations to the winners at the elementary, middle school, high school, and (new this year) college level, who received amazon.com gift cards and online recognition for their efforts.



## JLPT to be Administered in the US by AATJ in 2013

Beginning with the 2013 test, the Japanese Language Proficiency Test (日本語能力試験) will be administered by AATJ. The JLPT is given once a year, in early December, at sites around the world. Five proficiency levels are offered, for learners at levels ranging from beginning to advanced. In the United States, the test is given at 13 sites around the country, and this year's test will be offered on **Sunday, December 1**.

Information on this year's test is online now at [www.aatj.org/jlpt](http://www.aatj.org/jlpt). Please encourage your students to find out about the JLPT and consider taking it as a way of testing their skills against those of students of Japanese worldwide.

### AATJ Spring Conference 2013

AATJ's annual spring conference, held in conjunction with the annual meeting of the Association for Asian Studies, took place Thursday, March 21, 2013, in San Diego, California. Approximately 250 AATJ members and others attended the conference, which featured a full day of seven concurrent sessions of paper and panel presentations by more than 100 AATJ members.

Other special events included a textbook workshop sponsored by a group of supporting publishers from Japan and a special session on developing materials based on the 3/11 Triple Disaster in Japan, sponsored by the Inter University Center 9T+Yokohama) and the Japan Foundation.

The complete conference program, including abstracts of all presentations and the program of the textbook workshop, can be found online at <http://www.aatj.org/conferences/spring/index.html>.

The keynote speech, by Professor Catherine Lewis of Mills College, focused on developments in Japan's education system, particularly the use of lesson study for teacher professional development. You can view Professor Lewis's PowerPoint presentation by clicking on the link at <http://www.aatj.org/conferences/spring/index.html>.



## News from Affiliates



### NCJTA

The Northern California Japanese Teachers Association (NCJTA) held its Spring conference April 28, at San Francisco State University. NCJTA invited Bradley Wilson from Arizona State University, and his talk was entitled "Incorporating Pop Culture in the Language Learning Environment." Takeshi Yoshida of "New People," a San Francisco based film distributor, also gave a talk about a new learning material "Happy Family Plan" (supported by the Japan Foundation). Yukie Hikida of Henry Gunn High School, in Palo Alto, also gave a brief talk.



### WATJ 20<sup>th</sup> Annual Conference

On February 9, 2013, members of the Washington Association of Teachers of Japanese (WATJ) met at Shorecrest High School in Shoreline, Washington for our 20<sup>th</sup> Annual WATJ Conference. Over sixty elementary-, middle-, and high school teachers and college professors spent the day networking, sharing ideas, and attending workshops.

With the theme of "Teaching Culture and Communication in a Japanese Classroom," Minako Takahashi and Chikako Misener, Conference Co-Chairs, coordinated **a workshop with Dr. Hiroko Kataoka**, Professor of Japanese at California State University, Long Beach, entitled *Teaching Culture in a Japanese Classroom: Standards-Based Instruction (and How to Cope with Stereotypes and Overgeneralization)*, and **a training session with Dr. Michele Anciaux Aoki**, World Languages Program Supervisor, OSPI, entitled *Linking World Languages to Common Core State Standards*.

The day concluded with the presentation of the **Leslie Birkland Award for Leadership and Excellence in Japanese Education**. This award, established in 2005, is presented to one member of the Japanese teaching community in Washington State each year who embodies the passion and dedication it takes to be an effective leader and teacher.

This year's award was presented to **Ms. Yayoi Brown**, Japanese teacher at University Prep. Brown sensei is known for her dedication to teaching Japanese, her passion for working with students, and her exceptional ability to lead the Japanese-teaching community. Since the beginning of her teaching career in 1998, Brown sensei has been a member of WATJ, WAFLT, AATJ, and NCJLT. She served seven years as an elected board member of the Washington Association of Teachers of Japanese, and was the driving force in establishing the now-annual Middle School Japanese Language and Culture Immersion Camp.

Brown sensei understands and applies the most current teaching methodologies and philosophies. Her gift to the Japanese teaching community is her ability to share her strategies, successes, and struggles in ways that help educators better reach their students. In the last five years, Brown sensei has presented over eleven workshops. Topics ranged from technology to standards-based instruction and assessment to community collaboration. A passionate and highly skilled teacher, Brown sensei has continually demonstrated her commitment to language learners at all levels and to the support and professional development of her colleagues.

Brown sensei's strengths are her humor, honesty, willingness to take risks to improve her craft, and her dedication to student learning. She mentors young teachers to ensure quality education, and she shares her deep understanding of student learning with us all.

We are pleased to recognize Ms. Brown's leadership and excited to share the news of her award.



# Summer Linguistics Institute for Youth Scholars

At The Ohio State University

The Basics of Language for Language Learners



**Learn:**

- Similarities and differences in sounds, words and sentence structure across languages.
- Tips for learning a language and avoiding typical language learner mistakes.
- How languages and cultures interact.



## 2013 DATES

SESSION 1: JULY 7-12

SESSION 2: JULY 14-19



**Courses** are taught by instructors from the award-winning department of Linguistics at The Ohio State University

**Residential Camp Cost: \$695** Includes meals, five nights in a college dorm, course materials and instruction.

**Commuter Cost: \$395** Includes course materials and instruction.



Application Deadline: May 30

For more information and an application, visit  
[www.linguistics.osu.edu/SLIYS](http://www.linguistics.osu.edu/SLIYS)

**Scholarships  
Available**



## CALL FOR PAPERS

### AATJ Japanese Heritage Language SIG On-line Journal

The Japanese Heritage Language (JHL) SIG invites submissions to its on-line journal of teaching and learning Japanese as a heritage language. This Web-based journal provides a forum for educators and researchers in the field of JHL to publish their research as well as their practical ideas such as curriculum design, classroom activities, assessment, and experiences related to teaching and learning JHL. Research articles or reports can be submitted at any time to the journal, and the reviewed articles are added to the website on an ongoing basis. The language of manuscripts is English or Japanese. Articles should not exceed 20 pages, double-spaced on US letter-size format. For details, please refer to the AATJ-JHL Journal webpage: <http://www.aatj.org/SIG/heritage/ejournal/index.html>. Authors should submit articles via electronic mail to the Chair of Editorial Board at [hoketani@emich.edu](mailto:hoketani@emich.edu).

## DID YOU KNOW?

AATJ Members can access the entire back run of  
*Japanese Language and Literature* on JSTOR



Through a special arrangement with JSTOR, the American Association of Teachers of Japanese is pleased to offer online access to the full back run of *Japanese Language and Literature* as an added benefit of AATJ membership.

Members will be able to search, browse, download, and print the full-text PDF versions from all back issues of *Japanese Language and Literature*, from the first issue of published in 1963 up until the most recent three years of content.

To learn more about this service,  
contact [aatj@aatj.org](mailto:aatj@aatj.org).

Information regarding JSTOR available at [www.jstor.org](http://www.jstor.org)





## Inspire Your Students With Priceless Experiences



We specialize in the design and implementation of customized study and tour programs for students and education professionals.



### Home Stay & School Visit All-inclusive Packages

We will arrange for your students to visit Japanese schools to interact with local students or teachers, both within and outside of the classroom setting. The students will also have a chance to participate in athletic or cultural activities. Home stay lodging allows the participants an opportunity to experience the culture of the Japanese host families in their private homes. (Packages include home stay, breakfast and dinner in the home environment, plus



### Cultural Experience: Explore unique and genuine Japanese experiences

We can introduce your students to a variety of cultural experiences within a local community. They will discover local cultural traditions hidden within today's modern communities of today. *Specifically: Calligraphy, Cooking, Sado (tea ceremony), Kado (flower arranging), Dance, Taiko Drumming, Karate, Zen Meditation, and more.*



### Tour Highlights: A wide selection of sights and your student may visit

#### Tokyo Sightseeing

Tsukiji Fish Market  
Sky Tree (a newly communication tower, 2723feet)  
Asakusa (Sensoji Temple & Nakamise Street)  
Imperial Palace  
Odaiba  
Akihabara  
Harajuku  
Ghibli Museum

#### Kyoto Sightseeing

Uzumasa Studio Park  
Kinkaku-ji Temple  
Kiyomizu Temple

#### Nara Sightseeing

Todai-ji Temple  
Horyu-ji Temple  
Nara Park



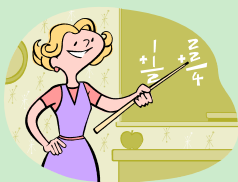
**米国日通旅行**  
NIPPON EXPRESS TRAVEL USA, INC.

Nippon Express Travel USA Inc. —

Established in 1962, Nippon Express Travel has the longest history in the U.S. among the Japan-based travel companies. We can plan, implement, review, and manage your travel, in order to exceed your travel group or program expectations.

For more information, please contact Yoko Kawamura Tel: 310-527-5050 E-mail: lax@tabi22.com

## Job Opening Announcements



### Bates College

Bates College invites applications for the position of **Japanese Language Learning Associate** starting September 2013 and ending April 2014. The candidate must have native fluency in Japanese, experience teaching Japanese, and hold a B.A. degree. An M.A. in language pedagogy is highly desirable. Responsibilities include drill instruction, tutoring, and supporting extracurricular activities. The position is full-time. In addition to a salary, the Learning Associate is provided with room and board, travel expenses, and health insurance.

Applicants should submit electronically in PDF format to Nancy LePage, Project Specialist, 207-786-6480, at [academicservices@bates.edu](mailto:academicservices@bates.edu) a letter of application, curriculum vitae, transcripts, and a minimum of one letter of recommendation. Please include your last name and R2136 in the subject line of all submissions. Review of applications begins April 8, 2013.

Bates College and the Program in Asian Studies are committed to enhancing the diversity of the campus community and the curriculum. Candidates who can contribute to this goal are encouraged to apply and identify their strengths and experiences in this area. Bates is an Equal Opportunity/Affirmative Action employer. For more information about the college, please visit the Bates website <http://www.bates.edu>.

### Brown University

The Department of East Asian Studies at Brown University invites applications for a **two-year position as visiting lecturer of Japanese language, effective July 1, 2013**. M.A. degree, or the equivalent, is minimally required. Native or near-native fluency in Japanese, competency in spoken and written English required. Candidates should have experience teaching Japanese language to English-speaking students at the college level. Experience directing Japanese language courses is also desirable.

Please provide a letter of application, curriculum vitae, a teaching portfolio (including a list of courses taught, syllabi, and an example of classroom teaching on DVD (or a link to video available online), and three letters of recommendation. Applications should be sent to: Search Committee for Japanese Language, Box 1850, Brown University, Providence, RI 02912. Please direct inquiries and all digitally submitted materials to [cas-search@brown.edu](mailto:cas-search@brown.edu). Priority will be given to applications received by **May 15, 2013**.

Brown University is an EEO/AA employer. Women and minorities are encouraged to apply.

### University of California, San Diego

The Program in Japanese Studies at the University of California, San Diego, is committed to academic excellence and diversity within the faculty, staff, and student body and invites applications for a **full-time lecturer position in Japanese language starting July 1, 2013**. The initial appointment is one year with the possibility of renewal on a yearly basis based on performance and funding availability.

Qualified candidates must have native or near-native proficiency in Japanese and English, have extensive experience in teaching all levels of Japanese language courses and in supervising and training teaching assistants. The successful candidate is expected to work with existing faculty members to design and develop content-based courses, thematic-based courses and/or Japanese language for special purposes. The preferred candidate will have demonstrated strong leadership or a commitment to support diversity, equity, and inclusion in an academic setting.

#### Selection Criteria:

- a. Japanese language and culture competency (high enough to function effectively in teaching situations and play a role model for students);
- b. higher degree in Japanese language, foreign language education, or related field;
- c. demonstrated teaching experience (above a teaching assistant level);
- d. expertise in language pedagogy, theories in second language acquisition, cognitive development (especially, current foreign language teaching approaches including content-based instruction, project-based instruction, thematic units, etc.);
- e. expertise in language assessment strategies;
- f. knowledge and skills to analyze students' needs and develop courses based on the needs analysis;
- g. abilities to create and manage a classroom environment conducive to Japanese language learning and to develop and employ multiple strategies to engage students actively in learning Japanese language and culture;
- h. abilities to identify, select, adapt, and use a wide variety of instructional resources and technology to enhance students' learning and to accommodate multiple students' needs with diversified backgrounds;



- i. knowledge and skills to link between Japanese language courses and the contents of other courses offered by Japanese Studies Program;
- j. Affirmation that Japanese language learning is appropriate for all students; regardless of language background, race, ethnicity, gender, religion, and other factors;
- k. Willingness to maintain and improve knowledge and teaching skills constantly;
- l. Abilities to communicate and advocate the value of learning Japanese language;
- m. Understanding the sequential nature of our curriculum and articulate the program by working effectively with colleagues.

Eligibility for U.S. employment will be required prior to employment (Immigration Reform and Control Act of 1986). For applicants interested in spousal/partner employment, please visit the UCSD Partner Opportunities Program website <http://academicaffairs.ucsd.edu/offices/partneropp/>.

The Program in Japanese Studies coordinates a variety of campus offerings related to the culture, history, political economy, and language of Japan and offers students the opportunity to major or minor in Japanese Studies. It offers six levels of Japanese language courses, including Advanced Japanese and Written Japanese.

A Ph.D. is desirable, but not required. Salary is commensurate with teaching experience and is based on University of California salary scales.

To apply, please submit an application letter, curriculum vitae, three references, course evaluations and a separate statement summarizing past or potential contributions to diversity (for further information about contributions to diversity statements, see <http://facultyequity.ucsd.edu/Faculty-Applicant-C2D-info.asp>) to the UCSD on-line application collection system, AP-On-Line Recruit, at: <https://apol-recruit.ucsd.edu/apply/JPF00345>.

Review of applications will begin on **April 30, 2013**, and continue until the position is filled. UCSD is an equal opportunity/affirmative action employer with a strong institutional commitment to excellence and diversity (<http://diversity.ucsd.edu>).

### Clemson University

The Department of Languages at Clemson University invites applications for the position of **Lecturer of Japanese**. This is a full-time, annually renewable position beginning August 15, 2013.

**Qualifications:** A master's degree or higher, preferably in Japanese language pedagogy, applied linguistics, or a related field in education or Japanese studies. We seek candidates who are committed to Japanese language education, open to new methodologies and technologies, and wish to join an active program that offers a major in MLA and L&IT (Language and International Trade). Native or near-native fluency in Japanese as well as an excellent command of English is required. Preference will be given to candidates with sufficient experience in teaching Japanese at various levels at an American college or university.

**Responsibilities:** Teaching elementary to advanced level Japanese language courses. Teaching load is 4 courses/sections per semester. Other responsibilities include student advising, curriculum development, advising, and participation in student activities as well as departmental events like the Clemson Declamation Contest and Annual L&IT Conference. Competitive salary is commensurate with qualifications and experience.

Applicants should submit a letter of application, a curriculum vitae, and three letters of recommendation by **April 5, 2013**, to Chair, Japanese Search Committee, Clemson University, Department of Languages, P.O. Box 340535, Clemson, SC, 29634-0535.

Clemson University is an Affirmative Action/Equal Opportunity employer and does not discriminate against any individual or group of individuals on the basis of age, color, disability, gender, national origin, race, religion, sexual orientation, veteran status or genetic information.

### Eckerd College

Eckerd College seeks a **Continuing Part-Time Instructor of Japanese**, to start September 2013. PhD or ABD in a Japan-related discipline and college-level teaching experience preferred. Candidates with MA in appropriate field considered. Near-native fluency in Japanese and English required. This position is paid a 5/7 share of a full salary and includes a benefit package including health care. Five courses per year, including elementary to advanced Japanese language and possibly a thematic course in the candidate's specialization. Eckerd College, the only independent national liberal arts college in Florida, has a tradition of innovative education and teaching/mentoring excellence.

Submit letter of application, vita, recent teaching evaluations, graduate transcripts, and contact information for two references via [www.eckerd.edu/hr/employment](http://www.eckerd.edu/hr/employment). A digital video clip of classroom teaching, if available, and inquiries should be sent to Prof. Eileen Mikals-Adachi, [mikalseb@eckerd.edu](mailto:mikalseb@eckerd.edu). Review of applications begins immediately and continues until position is filled.

Qualified candidates must be authorized to work in the United States for the College.  
EOE. Applications from women/minorities encouraged.

### Grinnell College

Grinnell College announces a **one-year part-time position in the Department of Chinese and Japanese (Japanese language and literature)**. Ph.D. preferred; M.A. possible. Candidates with background in language pedagogy are especially welcome to apply. The teaching schedule of four courses over two semesters will include Japanese language courses at different levels and possibly a course in Japanese literature or culture.

For complete description and application instructions go to <https://jobs.grinnell.edu>. To be assured of full consideration, all application materials should be received by **April 5, 2013**. Candidates will need to upload a letter of application, cv, transcripts

(copies acceptable), and provide email addresses for three references.

Questions about this search should be directed to Professor Mariko Shigeta Schimmel, [JapaneseSearch@grinnell.edu](mailto:JapaneseSearch@grinnell.edu), or 641-269-3141. AA/EOE.

### Illinois Wesleyan University

The Department of Modern and Classical Languages and Literatures at Illinois Wesleyan University invites applications for the position of **Visiting Assistant Professor of Japanese/Lecturer in Japanese**. This is a two-year, full-time position (2013-2015) to begin in August 2013. Candidates should be able to demonstrate expertise in teaching Japanese language, literature, linguistics and culture at the undergraduate level. Will teach 3 courses per semester. For more information about the department, visit <http://www2.iwu.edu/mcll>.

Please send a letter of application, curriculum vitae, teaching philosophy statement, transcript, and three letters of recommendation to: James Matthews, Chair, Modern and Classical Languages and Literatures, Illinois Wesleyan University, 201 E. University, Bloomington, IL 61701. Review of applications to begin on **June 1, 2013**. Illinois Wesleyan University is an Equal Opportunity Employer Committed to a Diverse Work Force. See <http://www2.iwu.edu/iwujobs/> for more information.

Illinois Wesleyan University is a highly selective, small, liberal arts institution with 2,100 undergraduates. It is located in Central Illinois in a twin cities of 125,000 inhabitants.

### University of Iowa

The Department of Asian & Slavic Languages and Literatures in the Division of World Languages, Literatures, and Cultures at The University of Iowa invites applications for a **one-year position in premodern Japanese at the level of Visiting Assistant Professor or Visiting Instructor** beginning August 2013 with the possibility of renewal. The successful candidate will show evidence of an active research agenda and will be prepared to teach courses in premodern Japanese literature, modern Japanese language, and a general-education course, Asian Humanities Japan. The teaching load is three courses per semester.

Education requirement: MA in Japanese literature, or language pedagogy with coursework in Japanese literature; PhD preferred, ABD considered.

Required qualifications: Native or near-native fluency in English and Japanese, and college-level teaching experience. The successful candidate will collaborate with our faculty in programmatic service.

Candidates should send a letter of interest, curriculum vitae, and an article-length writing sample to the Search Committee online at <http://jobs.uiowa.edu> and must submit three e-mail addresses of recommenders online to the same link. Refer to requisition number **62597**. Salary and benefits will be commensurate with qualifications and experience. Screening begins immediately, and preliminary interviews may be conducted by telephone or teleconference.

The Department of Asian and Slavic Languages and Literatures, the Division of World Languages, Literatures, and Cultures, and the College of Liberal Arts and Sciences are strongly committed to gender and ethnic diversity; the strategic plans of the University, College, Division, and Department reflect this commitment. Women and minorities are encouraged to apply. The University is an Equal Opportunity Employer/Affirmative Action Employer.

### Knox College

The Asian Studies Program at Knox College invites applications for a **full-time, visiting (non-tenure track) position in Japanese language and area studies** beginning September 2013. The position will have an initial one-year contract with a possibility of renewal. Knox is an independent, highly selective liberal arts institution with a diverse student body and a strong commitment to undergraduate teaching. The successful candidate will join a thriving Japanese language program and teach Japanese language courses and Japanese studies courses in the candidate's area of specialization. Preference will be given to candidates whose expertise will augment Asian Studies course offerings in such areas as Japanese literature, art history, and/or pre-modern history and culture. The successful candidate will also contribute to the College's occasional off-campus study/travel programs in East Asia. (e.g. <http://www.knox.edu/academics/distinctive-programs/japan-term.html>). For information about Knox, consult the College's website at [www.knox.edu](http://www.knox.edu) or contact [mschneid@knox.edu](mailto:mschneid@knox.edu).

Qualifications: PhD or ABD; native or near native fluency in Japanese and English; demonstrated excellence in teaching required. In keeping with the college's 176-year commitment to equal rights, Knox actively encourages women and members of other underrepresented groups to apply.

Send letter of application, curriculum vitae, evidence of teaching ability (including teaching evaluations, sample syllabi for courses you have taught or would like to teach, a teaching demonstration video, etc.), a description of current teaching interests, and three letters of reference to: Professor Michael A. Schneider, Chair, Asian Studies Program, Knox College, Box K-24, 2 East South St., Galesburg, IL 61401-4999. Electronic submissions accepted at [mschneid@knox.edu](mailto:mschneid@knox.edu).

Review of applications will begin **April 26, 2013**, and continue until the position is filled.

### University of Massachusetts, Amherst

The program in Asian Languages and Literatures of the Department of Languages, Literatures and Cultures, University of Massachusetts Amherst, invites applications for a position as **Lecturer in Japanese. One-year fulltime, renewable position to begin September 1, 2013**. Preference will be given to candidates with experience in proficiency-based language instruction and native or near-native command of Japanese. M.A. in Foreign Language Pedagogy, Second Language Acquisition or a related field is required.

Please send a c.v., three letters of recommendation, a statement of teaching philosophy, and a 40 minute video of your classroom teaching to: Japanese Search Committee, Asian Languages and Literatures (LLC), 440 Herter Hall, University of Massachusetts, Amherst, MA 01003-9312. Review of applications will begin **April 5, 2013** and will continue until the position is filled.



Salary commensurate with experience and qualifications. The department is committed to developing a more diverse faculty, student body, and curriculum.

The University of Massachusetts Amherst is a member of the Five College Consortium along with Amherst, Hampshire, Smith, and Mount Holyoke Colleges and is also a member of the Academic Career Network, a resource for dual career couples. The University of Massachusetts Amherst is an Affirmative Action / Equal Opportunity Employer; applications from women and members of minority groups are encouraged.

### University of Minnesota

The Department of Asian Languages and Literatures in the College of Liberal Arts at the University of Minnesota seeks to fill a **full-time appointment to teach Japanese starting fall semester 2013**. The position will be full-time for the fall semester 2013 (08/26/13 - 01/08/14) and/or spring semester 2014 (01/09/14 - 05/25/14). There is an option for teaching summer courses. The position is for day, evening, or a combination of day/evening courses, taught on a semester basis. Full-time appointments are eligible for benefits. Salary range is competitive based upon qualifications. The position may be annually renewable depending on departmental need, funding and performance.

Full description and application procedures are found at: [www.umn.edu/ohr/employment](http://www.umn.edu/ohr/employment). Search for requisition number 184315 and follow the instructions.

Applicants are required to submit the following materials (a) – (e) electronically to the above site.

- a) letter of application
- b) current curriculum vitae
- c) names and contact information of three references
- d) description of your teaching philosophy
- e) samples of teaching materials (e.g. syllabus, teaching plan, exams, handouts, handouts of ppt slides, etc.)

Additional materials may be requested for further evaluation. Incomplete applications will not be considered. The University of Minnesota is an equal opportunity educator and employer.

Questions regarding this position should be directed to: Michiko Todokoro Buchanan at [buch0119@umn.edu](mailto:buch0119@umn.edu).

### University of Notre Dame

The Department of East Asian Languages and Cultures invites applications for a **visiting assistant professor in modern Japanese literature and culture, beginning August 2013**. Area of specialization is open; preference will be given to candidates who can offer courses in modern fiction, film, and/or popular culture. Ph.D. degree preferred by date of appointment, but ABDs are encouraged to apply. The position may be renewed for a second year. Responsibilities include teaching two undergraduate courses per semester, active programmatic involvement, and close collaboration with our faculty to advance our Japanese language and culture program.

Applications should include a cover letter, current curriculum vitae, statement of teaching philosophy, and three letters of recommendation. Review of applications will begin **April 15, 2013**, and continue until the position is filled. Applications and inquiries should be directed to Dayle Seidenspinner-Nunez, Chair, Department of East Asian Languages and Cultures, University of Notre Dame, Notre Dame, IN 46556 ([dsnunez@nd.edu](mailto:dsnunez@nd.edu)); application materials may be submitted electronically.

An international Catholic research university, Notre Dame is an affirmative action employer with a strong commitment to cultural, racial, and gender diversity. Persons of color, women, members of under-represented groups, and those attracted to a university with a Catholic identity are encouraged to apply. Information about Notre Dame is available at <http://www.nd.edu>; information about the Program of Japanese Language and Culture and the Department can be found at <http://eastasian.nd.edu>.

### Pennsylvania State University

The Asian Studies Program is searching for a **full-time lecturer in Japanese beginning August 2013**. The position offers benefits and a one- or two-year contract with the possibility of renewal. Salary is competitive. Responsibilities include teaching introductory through advanced Japanese language courses (and perhaps some culture courses), as well as participation in programmatic service such as advising, supervision of graduate assistants and adjunct instructors, and curriculum development for our B.A. program in Japanese.

Minimum requirements include Master's degree in Japanese or related discipline and near-native ability in both Japanese and English. Preference is given to those who have appropriate teaching experience and evidence of high quality pedagogy. We especially welcome candidates who are interested in further developing our technology-enhanced instructional environment and in collaborating with other colleagues who are teaching languages.

To apply, please submit a letter of application, CV, and a video of the candidate's teaching at the following website: <http://www.la.psu.edu/facultysearch/>. The names of three references should be sent to Jamie Frazell at [jlf47@psu.edu](mailto:jlf47@psu.edu). If unable to submit electronically, please send to Jamie Frazell, The Asian Studies Program, School of Languages and Literatures, Pennsylvania State University, Old Botany, University Park, PA 16802. Applications can also be sent by Fax to: 814-863-3528. ATTN: Jamie Frazell.

We will begin reviewing applications as they arrive, and plan to interview via Skype. Applications received by **April 25, 2013**, are guaranteed full consideration, but all applications will be considered until the search is completed.

Visit our Web site: <<http://asian.la.psu.edu/>> <http://asian.la.psu.edu>. Employment will require successful completion of background check(s) in accordance with University policies. Penn State is committed to affirmative action, equal opportunity, and the diversity of its workplace.

### University of Virginia

The Department of East Asian Languages, Literatures and Cultures at the University of Virginia seeks applications for a **one-year non-renewable replacement lecturer position in Japanese language** during the 2013-14 academic year. The successful applicant will teach up to 15 class contact hours of Japanese Language courses per semester. We are seeking a highly skilled language instructor with native or near-native proficiency in Japanese and English, and demonstrated success teaching Japanese at the college/university level in the U.S. An M.A. degree in teaching Japanese as a foreign language, linguistics, second language acquisition, or related field is preferred. Candidates must have a strong commitment to teaching. Applications will be considered immediately.

To apply, please complete a Candidate Profile online through Jobs@ UVA (<https://jobs.virginia.edu>), and electronically attach the following: a current CV, cover letter, and complete contact information for three professional references. In addition, please attach a sample syllabus where "other" document is indicated. Search for posting 0611797.

Questions regarding this position should be directed to Michiko Wilson (434-924-4642; [mnw5m@virginia.edu](mailto:mnw5m@virginia.edu)).

Questions regarding the online application process should be directed to Maggie vanEkeren (434-982-2665; [mvb3q@virginia.edu](mailto:mvb3q@virginia.edu)).

The University will perform background checks on all new faculty hires prior to making a final offer of employment. The University of Virginia is an affirmative action/equal opportunity employer committed to diversity, equity, and inclusiveness. Women, minorities, veterans and persons with disabilities are encouraged to apply.

### Wake Forest University

The Department of East Asian Languages and Cultures at Wake Forest University is seeking a Visiting Assistant Professor of Japanese Literature and Culture for the 2013-14 academic year. Review of applications for the visiting position begins immediately. The successful candidate will teach three courses a semester. A Ph.D. degree in Japanese Literature is desired, but ABD candidates will also be considered.

Applicants are required to submit electronically to <https://wakejobs.silkroad.com> a letter of application, curriculum vitae, and three references. We may request additional materials (such as graduate school transcripts, course evaluations, syllabi, statement of teaching philosophy, etc.) later.

For additional information about Department of East Asian Languages and Cultures, visit <http://college.wfu.edu/ealc/>. Wake Forest University is a private, coeducational institution dedicated to academic excellence in liberal arts, graduate and professional education. Founded in 1834, the University is ranked among the top thirty national universities. With 4,300 undergraduates and 2,200 graduate and professional students, the student-faculty ratio is 10:1. Wake Forest is a collegiate university offering a vibrant intellectual community with a rich cultural life, an impressive array of facilities and an active athletics community. The University has a deep institutional commitment to public service and engagement with the world. For quick facts about the University, go to <http://www.wfu.edu/visitors/quickfacts.html>.

Wake Forest is located in Winston-Salem, North Carolina, part of the beautiful Piedmont Triad metropolitan region which has a population of more than 1.5 million and is listed among the top 35 best places to live in North America by Cities Ranked and Rated.

Winston-Salem offers a vast array of arts experiences ranging from music venues to galleries to theatre and film festivals. The city is also ranked among the top 50 US cities for affordability on national surveys.

Wake Forest seeks to recruit and retain a diverse workforce, and encourages qualified candidates across all group demographics to apply.

### University of Wyoming

The Department of Modern and Classical Languages at the University of Wyoming (Laramie, WY) welcomes applications for a **part-time, benefited Japanese lecturer** for the 2013-2014 academic year, beginning in August, 2013. M.A. degree in Japanese language or linguistics preferred; native or near-native fluency in Japanese required. Applicants should have teaching experience at the university level and must demonstrate excellence in teaching. Duties include teaching undergraduate level Japanese language courses at the beginning, intermediate, and advanced levels.

To apply, send a letter of application, vita, and 2 letters of recommendation to: Mr. Dwight Hicks, Dept. of Modern and Classical Languages #3603, University of Wyoming, 1000 E. University Ave., Laramie, WY 82071-3603. For any questions with regard to your application, call 307-766-4177 or email [dhicks@uwyo.edu](mailto:dhicks@uwyo.edu).

Review of applications begins immediately and will continue until position is filled. All offers of employment are contingent upon completion of a background check. The University of Wyoming is an Equal Opportunity/ Affirmative Action employer.



# NAGOYA UNIVERSITY

## GLOBAL 30 INTERNATIONAL PROGRAMS

### Challenge Experience Future

**G30** <http://admissions.g30.nagoya-u.ac.jp>  
Furo-cho, Chikusa-ku, Nagoya, 464-8601, Japan



## Programs taught in English

### Undergraduate Programs

Automotive Engineering

Biological Sciences

Chemistry

Fundamental and Applied Physics

Social Sciences

Japan-in-Asia Cultural Studies Program

### Graduate Programs

(M) Master's (D) Doctoral

Biological and Bioagricultural Sciences Graduate Program

(M) (D)

Chemistry Graduate Program

(M) (D)

Comparative Studies of Language and Culture Program

(M)

Graduate Program in Economics and Business Administration

(M)

Medical Science Graduate Program

(D)

Physics and Mathematics Graduate Program

(M) (D)

Japan-in-Asia Cultural Studies Program

(M)

### • Fact and Figures

- Research intensive University
- Ranked 86 in the world by QS 2012
- 4 Nobel Laureates in Chemistry and Physics
- 16,600 students, 10% international students
- 4th largest city, located in the center of Japan

### • Nagoya University

**Global 30**

#### Undergraduate Tuition Fee

JPY 535,800/per year  
(approx. USD 5,500)

### • Nagoya University

**Global 30**

#### Undergraduate Scholarships

Based on academic merit and financial need, the maximum total award will be 500,000 JPY per year. Selected recipients will also be receiving up to 100% tuition waiver and registration fee waiver on top of the scholarship.





## Opportunities

### Seeking Cooperation from Secondary School Teachers for Research on the Image of a Good Japanese Language Assistant

Yamaguchi Prefectural University, has, since 1997, been sending our students in its TJFL (Teaching Japanese as Foreign Language) program every year as teaching assistants to schools and universities in Canada, the United States, China, Ireland, Malaysia, Thailand, Australia, and New Zealand where pupils and students are learning Japanese as a foreign language. These teaching assistants have benefited greatly from the teaching assistantship abroad.

In an effort to improve the quality of the TJFL program, the faculty of Yamaguchi Prefectural University is conducting a survey on the image of a good Japanese language assistant from the viewpoint of Japanese language teachers' point of view in secondary schools in Australia, Canada, Ireland, New Zealand and the United States. They ask for the assistance of secondary school teachers of Japanese in completing an online survey.

The data will be used for statistical purposes; all personal information is confidential and will not be used except for the purpose of the study. The various qualities that are gleaned as a result of the study will be shared through presentations or published articles. Those who respond to the survey will be able to access a trial version of the university's latest Kanji learning program.

Responses are requested by **May 31, 2013**. To participate:

1. Open the following URL in your web browser: <http://zouni.ypu.jp/survey>
2. Fill in Username and Password, and log in.

Username: assistant

Password: Japanese

3. Click on "Questionnaire for a Survey on Japanese Language Assistants"
4. Choose English version or Japanese version
5. Answer questions.
6. Click on "Submit your answers".

For further information on the survey or the project, contact Professor Hizuru Furubeppu at [bcd000484192@cnc.bbiq.jp](mailto:bcd000484192@cnc.bbiq.jp).

### Introducing LinguaeLive.ca – a free tool for eTandem to provide students with opportunities to learn from international peers

**Jennifer Hosek and Mayu Takasaki, Queen's University**

Is your class benefitting from the power of eTandem learning? Are you looking for ways to increase your students' opportunity for authentic communication?

LinguaeLive.ca offers an easy new way for you to get your students involved in peer-to-peer language exchanges using Voice over IP (such as Skype). LinguaeLive.ca allows any instructor to find and connect with international colleagues teaching complementary languages. They can then link their students for peer-to-peer communication.

This site is free and open to all, thanks to an SSHRC (Social Sciences and Humanities Research Council of Canada) grant. eTandem is a great way to help students improve their language and cultural skills and make connections abroad. Go to [www.LinguaeLive.ca](http://www.LinguaeLive.ca) to see how you can easily find a partner class, make pairings, and track students' session times. The website accommodates any language pairings.

If you have questions, please contact Professor Jennifer Hosek, the founder of LinguaeLive.ca ([jhosek@queensu.ca](mailto:jhosek@queensu.ca)), or Mayu Takasaki ([mayu.takasaki@queensu.ca](mailto:mayu.takasaki@queensu.ca)).





YAMATE

Dear Japanese language teachers,

We are looking for high schools and host families to host our high school students.

## Yamate Student Exchange Program

has been sending our students to the US for two weeks since 1969.  
This program that started sending 134 students in 1969 has expanded to 478 students in 2012.



### Concept

Setsuko Emori, a graduate of a US university who had many American friends, founded Yamate Gakuin High School in 1966. After World War II, she determined to foster bilateral understanding through exchange programs between the two countries. These programs have continued for more than 40 years.

### History

First, 134 Yamate Gakuin students visited Dayton, Washington in 1969. The following year, 153 students visited, and three months later 150 American students visited Japan in return to stay with Japanese host families for two weeks. Yamate students have been continuing to visit every second week of April. Every third week of July, US students have been visiting in return. Last year, in 2012, 478 students visited five cities in the US and Canada.

Now that our school is popular and has been expanding, we are looking for more US high schools and families to host our students. **2014 dates is April 11-25. Return visit for US students is July 19-August 2.** More information is available on our website :

<http://www.yamate-gakuin.ac.jp/english>.

If your school may be interested in hosting our students, please do not hesitate to contact me at

[principal@yamate-gakuin.ac.jp](mailto:principal@yamate-gakuin.ac.jp).

We are ready to provide an expense allowance to you for your students and accommodation for chaperons.



Yours sincerely

*Hajime Maejima*

Hajime Maejima  
Principal  
Yamate Gakuin High School  
Kamigo-cho 460, Sakae-ku, Yokohama, 247-0013 Japan

## Contributions to AATJ Endowment

AATJ has joined the ranks of other non-profit organizations in establishing an endowment fund. Contributions of any amount to this fund, which are tax-deductible, will help to ensure that the Association can continue to provide services to members in the future. Please consider donating when you next renew your membership, or by mail at any time. For more information, contact the AATJ office.

Endowment contributions for May 2013 newsletter:

**Natsumi Ito**  
**Yuki Johnson**  
**Machiko Romaine**  
**Robert Russell**  
**Yumi Yoshida**

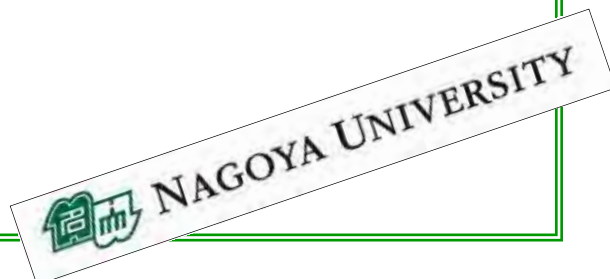


## Support Our Sponsors

**Nippon Express Travel USA** is a corporate sponsor of AATJ. Nittsu Travel wants to help teachers take students to Japan. Find out more about their services at [http://www.nittsutravel.com/e\\_index.php](http://www.nittsutravel.com/e_index.php).

**JTB USA** is a sponsor of AATJ's annual conferences. Visit <http://www.jtbusa.com> to find out about the company's travel services focusing on travel to and within Japan.

**Nagoya University** is a corporate sponsor of AATJ. Visit <http://admissions.g30.nagoya-u.ac.jp> to find out about Nagoya's Global 30 International Programs taught in English.





# AMERICAN ASSOCIATION OF TEACHERS OF JAPANESE

1424 Broadway • UCB 366 • Boulder, CO 80309-0366  
303-492-5487/Fax 303-492-5856 aatj@aatj.org • www.aatj.org

## Membership Application/Renewal

Membership in AATJ is on a **calendar-year basis** and entitles you to:

- receive four issues annually of the *AATJ Newsletter* and other publications
- present research at and attend the annual AATJ Conferences in conjunction with AAS and ACTFL
- nominate students for induction into the Japanese National Honor Society
- read and post job opening announcements and other information on AATJ website
- participate in activities of regional/state affiliates and Special Interest Groups
- benefit from the Association's ongoing efforts to promote Japanese studies and enhance the quality of education in Japanese language, literature, linguistics, and culture.

The categories of membership and the corresponding dues are indicated below. Please return the form with your check (US dollars) or VISA/MasterCard number to the address above. Online registration is also available at [www.aatj.org/membership.html](http://www.aatj.org/membership.html).

Name (print):		Date:	
Address:	Tel:		
	E-mail:		
	School/Organization where you work:		
	<b>Area of specialization:</b> <input type="checkbox"/> Language Teaching <input type="checkbox"/> Linguistics <input type="checkbox"/> Literature		
<b>Membership Category (check):</b> Regular Member: <input type="checkbox"/> \$40 Student Member: <input type="checkbox"/> \$20 Optional: <i>Japanese Language &amp; Literature</i> (2 issues): <input type="checkbox"/> \$5 Institution: (includes all publications) <input type="checkbox"/> \$60 Shipping & handling (outside of U.S.) <input type="checkbox"/> \$20 Total Payment (U.S. Dollars) _____		<b>Special Interest Groups:</b> <input type="checkbox"/> AP <input type="checkbox"/> Classical Japanese <input type="checkbox"/> Community College <input type="checkbox"/> Heritage Language <input type="checkbox"/> Japanese for Specific Purposes <input type="checkbox"/> Language & Culture <input type="checkbox"/> Professional Development <input type="checkbox"/> Proficiency Assessment <input type="checkbox"/> Study Abroad	
<input type="checkbox"/> Check Enclosed <input type="checkbox"/> MasterCard/VISA  # _____ Exp. ____/____  Signature _____		<b>Affiliate (Choose one)</b> <input type="checkbox"/> Alaska (AKATJ) <input type="checkbox"/> Arizona (AzATJ) <input type="checkbox"/> California (CAJLT) <input type="checkbox"/> California-north (NCJTA) <input type="checkbox"/> Colorado (CJLEA) <input type="checkbox"/> Florida (AFTJ) <input type="checkbox"/> Georgia (GATJ) <input type="checkbox"/> Guam (JALTA) <input type="checkbox"/> Hawaii (HATJ) <input type="checkbox"/> Illinois (IATJ) <input type="checkbox"/> Indiana (AITJ) <input type="checkbox"/> Inter-mtn (IMATJ) <input type="checkbox"/> Iowa (JLCTIA) <input type="checkbox"/> Kentucky (KAJLT) <input type="checkbox"/> Louisiana (LATJ)	<input type="checkbox"/> Michigan (JTAM) <input type="checkbox"/> Mid-Atlantic (MAATJ) <input type="checkbox"/> Missouri (MATJ) <input type="checkbox"/> Minnesota (MCTJ) <input type="checkbox"/> Nevada-south (SNJTA) <input type="checkbox"/> New Jersey (NJATJ) <input type="checkbox"/> N. Carolina (NCATJ) <input type="checkbox"/> Northeast (NECTJ) <input type="checkbox"/> Ohio (OATJ) <input type="checkbox"/> Oregon (ATJO) <input type="checkbox"/> Texas (JTAT) <input type="checkbox"/> Washington (WATJ) <input type="checkbox"/> Wisconsin (WiATJ)  <input type="checkbox"/> I live outside of the U.S.

American Association of Teachers of Japanese, Inc.  
1424 Broadway, Campus Box 366  
University of Colorado  
Boulder, CO 80309-0366

NONPROFIT ORG  
U.S. POSTAGE  
PAID  
BOULDER, CO  
PERMIT NO. 94

## AATJ Board of Directors

Co-Presidents:

**Jessica Haxhi** (Maloney Magnet School, CT)  
**Yasu-Hiko Tohsaku**  
(University of California, San Diego, CA)

Vice-President/Treasurer:

**Susan Tanabe** (North Salem High School &  
Chemeketa Community College, OR)

Vice-President/Secretary:

**Motoko Tabuse** (Eastern Michigan University, MI)

Spring Conference (AAS-affiliated) Co-Directors:

**Joan Ericson**  
(Colorado College, Colorado Springs, CO)  
**Masahiko Minami**  
(San Francisco State University, CA)

Fall Conference (ACTFL-affiliated) Co-Directors:

**Noriko Fujioka-Ito** (University of Cincinnati, OH)  
**Yasuko Takata Rallings**  
(Wake Forest University, NC)

Professional Development Co-Directors:

**Eiko Ushida** (University of California, San  
Diego, CA)  
**Yasuko Ito Watt** (Indiana University, IN)

Advocacy and Outreach Co-Directors:

**Janet Ikeda** (Washington & Lee University, VA)  
**Mamiya Worland** (Fairfax County Public  
Schools, VA)

National Exam Co-Director:

**Nobuko Hasegawa**  
(LaGuardia High School of Performing Arts, NY)  
**Tomoko Takami** (University of Pennsylvania)

Activities and Awards Co-Directors:

**Lynn Sessler Neitzel**  
(Menasha Joint School District, WI)  
**Shingo Satsutani** (College of DuPage, IL)

Publications Director:

**Emi Ochiai Ahn**  
(Mesa Community College, AZ)